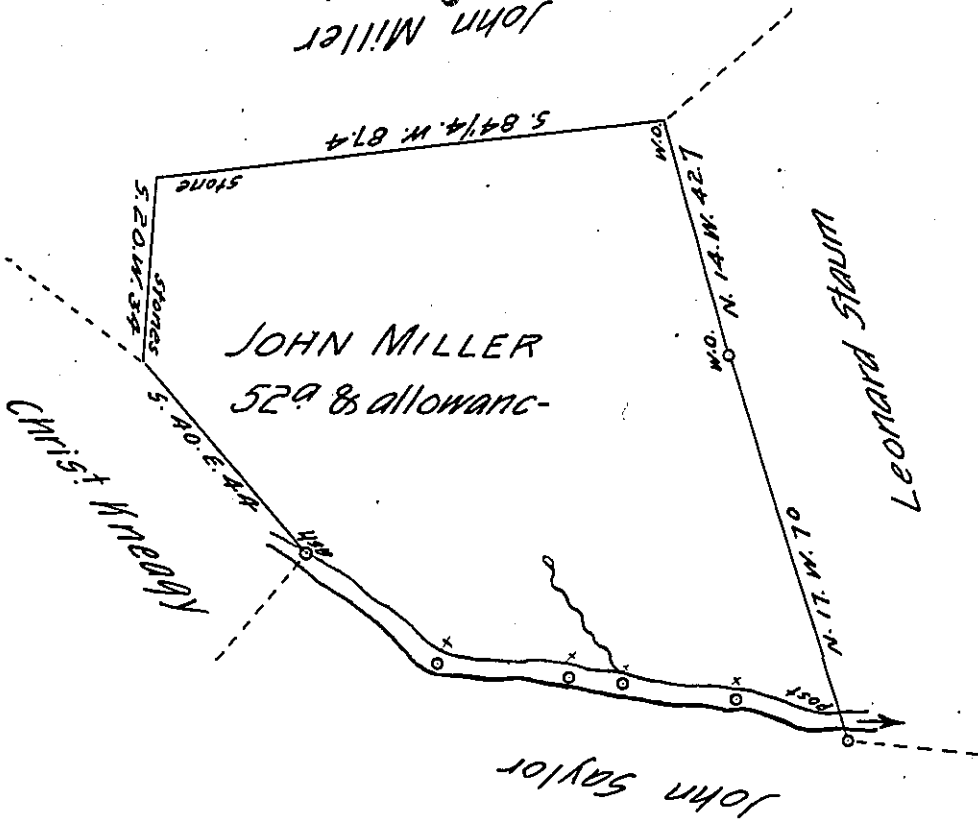


See preceding page
John Miller

The Course and Distances
down Elk Lick from Ash to post.
S. 51° E. 30 p^s
S. 84. E. 24
S. 68. E. 10
S. 88. E. 22
S. 69. E. 23
to post 109—



Situate on the Waters-Elk Lick Creek, including an improvement in Elk-Township,
Now Somerset County and surveyed by Alexander McClean, Esq. late O.S. the 24th
day of July 1797, in pursuance of a Warrant Granted unto John Miller, dated the 4th
day of February 1793 for 50^a. Certified the 8th day of February 1806.

for John McClean, Deputy

To Samuel Cochran, Esquire,
Surveyor General

IN TESTIMONY that the above is a copy of the original remaining on file in
the Department of Internal Affairs of Pennsylvania, made
conformably to an Act of Assembly approved the 16th day of
February, 1833, I have hereunto set my Hand and caused
the Seal of said Department to be affixed at Harrisburg,
this fifth day of January 1906.

John A. R. Brown
Secretary of Internal Affairs.